

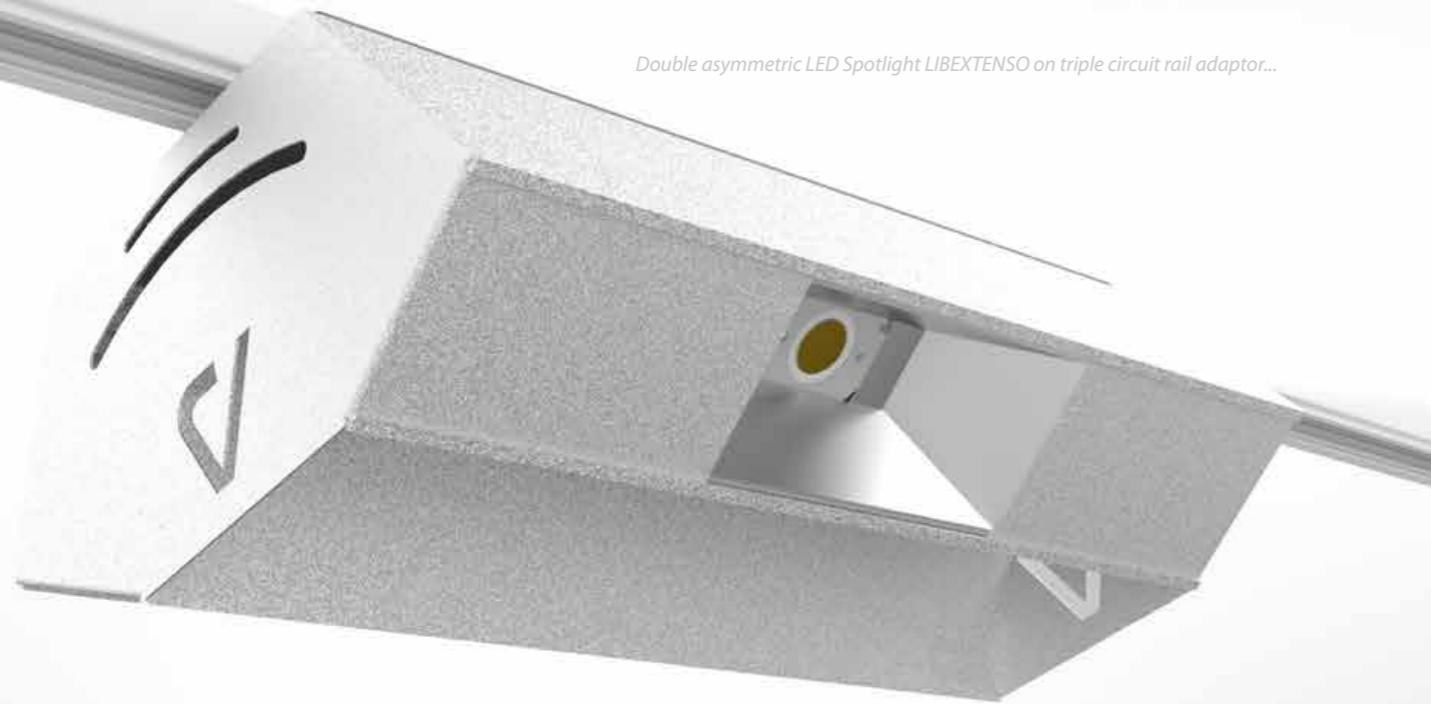
Libextenso



Double asymmetric Recessed LED spotlight LOFTI...



Double asymmetric LED Spotlight LIBEXTENSO on triple circuit rail adaptor...



**Description :**

Double asymmetric surface mounted LED spotlight

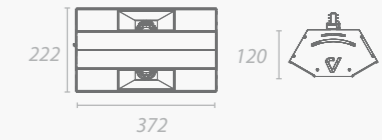
**Uses :**

Supermarkets, shops, etc....

**Product informations :**

LED driver included / Material : extruded aluminium

**Dimensions :**



**Wattage, luminous flux and performance :**

		Flux	Wattage	Performance	Lamp life
3000°K	3000 Lm	2x 3271 Lm	2x 20,4 W	160 Lm/W	50 000 hours L80 F10
3000°K	5000 Lm	2x 4972 Lm	2x 32,6 W	153 Lm/W	50 000 hours L80 F10
3000°K	5400 Lm	2x 5423 Lm	2x 36,5 W	144 Lm/W	50 000 hours L80 F10
		Flux	Wattage	Performance	Lamp life
4000°K	3000 Lm	2x 3221 Lm	2x 20,4 W	158 Lm/W	50 000 hours L80 F10
4000°K	5000 Lm	2x 5098 Lm	2x 32,6 W	158 Lm/W	50 000 hours L80 F10
4000°K	5400 Lm	2x 5561 Lm	2x 36,5 W	147 Lm/W	50 000 hours L80 F10

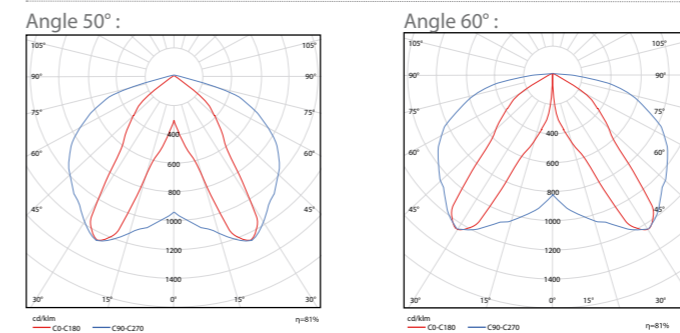
**Mountings :**

Triple circuit rail adaptor mounted

**Finishes :**

White (9016G) / Grey (9006G) / Black (9005G) / RAL colour chart

**Light distribution curves :**



(Ta < 35°C)

Not contractual document

